

# Studio 3 - factsheet



## Your room planning:

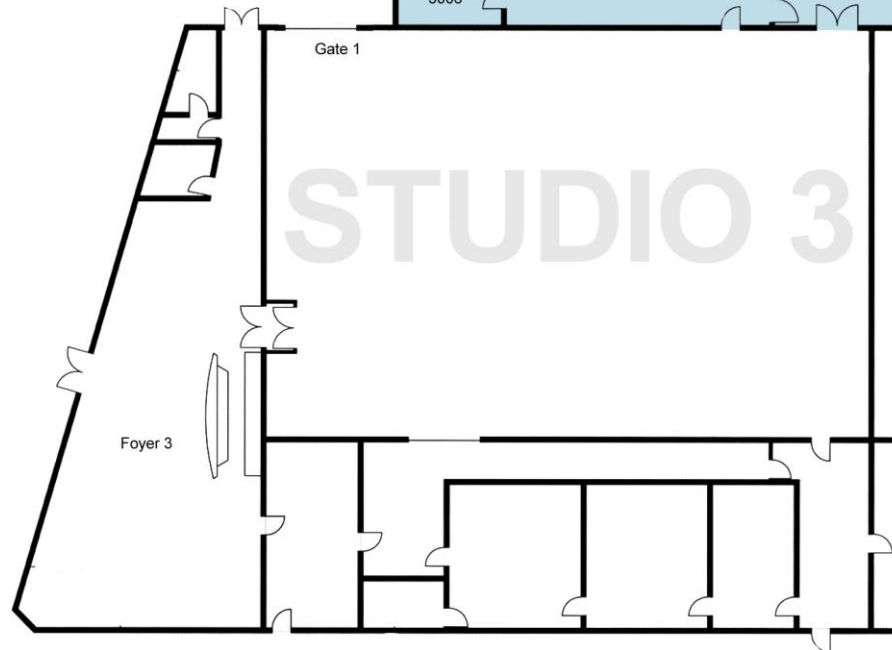
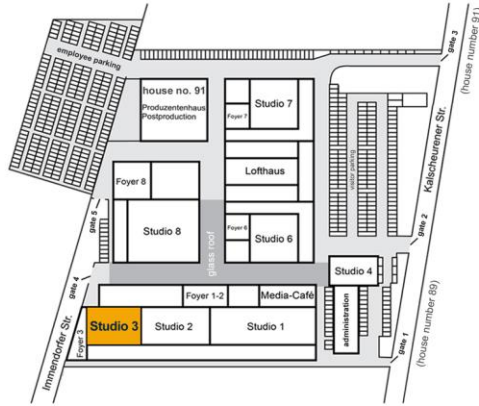
production: \_\_\_\_\_  
 period: \_\_\_\_\_

## ground floor

make-up 3002: \_\_\_\_\_  
 office 3004: \_\_\_\_\_  
 office 3006: \_\_\_\_\_  
 office 3007: \_\_\_\_\_  
 office 3008: \_\_\_\_\_

## upper floor

office 3102: \_\_\_\_\_  
 office 3103: \_\_\_\_\_  
 office 3104: \_\_\_\_\_  
 office 3105: \_\_\_\_\_  
 office 3106: \_\_\_\_\_  
 office 3107: \_\_\_\_\_  
 office 3109: \_\_\_\_\_  
 office 3110: \_\_\_\_\_



## Measures and technical features

Length: 27.25 m  
 Width: 19.50 m  
 Surface area: 530 sqm  
 High to grid: 6.80 m  
 Curtain rail (H/L): 6.75 m x 79.00 m  
 Passageway: 1.00 m  
 Gate 1 (H/W): 4.00 m x 3.30 m

Light: 96 \* 2.5 KW dimmer

Due to our technical production network studio 3 could be operated with our HD direction 1 or our OB truck nobeo1. In addition, every direction benefits from direct access to our postproduction unit, allowing us to process an efficient tapeless workflow.

Foyer (190 sqm) with ample sanitary installations, wardrobes etc.

More than 12 side and guest rooms, production offices in the building

2 make-up rooms and additional mobile make-up facilities

Large parking facilities for the team and viewers in close proximity

More information at  
[www.nobeo.de](http://www.nobeo.de) or [sales@nobeo.de](mailto:sales@nobeo.de)